



Henry W. Pirkey Plant

Pirkey (lignite) – The Henry W. Pirkey Plant, located in east Texas, is a lignite-fueled plant. OMPA owns a 15-megawatt share of this 640-megawatt unit. The plant owner is Southwest Electric Power Company (SWEPCO). The Pirkey Plant was the Authority’s first owner source and has been supplying OMPA with power since 1985.



Redbud Generating Facility

Redbud (natural gas) – The Authority partnered with OG&E and GRDA in 2008 to purchase the 1,230-megawatt natural gas-fired Redbud Generating Facility located near Luther, Oklahoma. OMPA owns a 13 percent share (160 megawatts) of the plant. OG&E owns 51 percent interest in the plant and is the plant operator with GRDA owning the remaining 36 percent. The combined-cycle, gas-fired Redbud plant consists of four 300-megawatt-plus generating units that are connected to the OG&E transmission system near the Oklahoma City area.



John W. Turk Jr. Power Plant

Turk (coal) – OMPA is investing in AEP’s Southwestern Electric Power Company (SWEPCO) nominal 600-megawatt baseload power plant, the John W. Turk Jr. Power Plant, being built on a 2,800-acre location north of Fulton, Arkansas in Hempstead County. SWEPCO also is the plant operator. OMPA’s share in the plant is 40 megawatts. Other participants include generating and transmission cooperatives in Texas and Arkansas. The plant will use an advanced clean coal combustion technology called “ultra-supercritical,” which requires less coal and creates fewer emissions to produce the same amount of power. The Turk plant is projected to be operational in October 2012.

In addition, six member cities - Fairview, Kingfisher, Laverne, Mangum, Pawhuska, and Ponca City - have municipal generating plants, which are leased to OMPA for operation and dispatched through the OMPA Operations Center in Edmond.

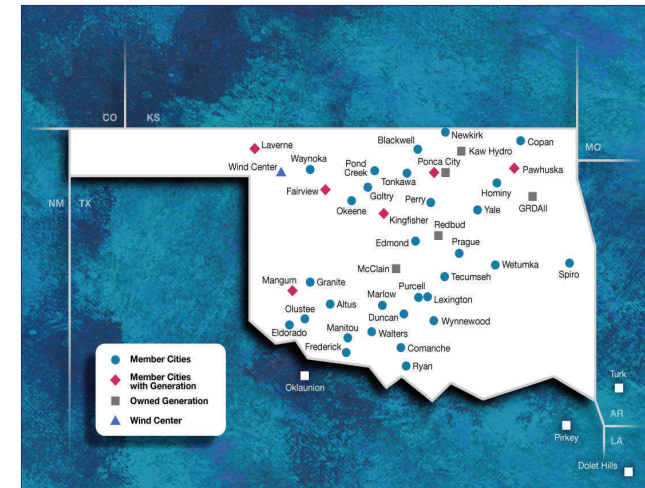
OMPA is a state governmental agency created by the legislature to serve cities and towns that own and operate their electrical distribution systems and is governed by the members. The Authority presently serves 36 municipally owned electric systems in Oklahoma.



Oklahoma Municipal Power Authority
 2701 West Interstate 35 Frontage Road
 Post Office Box 1960
 Edmond, Oklahoma 73083-1960
 Phone: 405/340-5047
 FAX: 405/359-1071
 OMPA Web Page Address: www.ompa.com

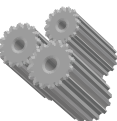


Providing Members With Power



Electric power for **Oklahoma Municipal Power Authority (OMPA)** members comes from a variety of sources. The Authority seeks a balanced approach to power supply resources available to meet members’ load growth needs.

OMPA remains committed to its mission statement, “To provide reliable, low cost energy and services to municipal entities to enable each municipality to be competitive, while maximizing the benefits of our stakeholders.”



OMPA Providing Members With Power

In addition to the Ponca City Power Plant Complex and the Kaw Hydroelectric Plant located on nearby Kaw Lake, OMPA member cities are joint owners of generating plants in four states – Arkansas, Louisiana, Oklahoma and Texas. Here’s an overview of these eight facilities:



Dolet Hills (lignite) -

Since 1986, OMPA has owned a 25-megawatt share of Dolet Hills Power Station located in Desoto Parish, Louisiana. This 640-megawatt plant is a lignite-fueled generating station and is a mine mouth plant, which means that fuel is mined at the site. Central Louisiana Electric Company is the plant operator.

Dolet Hills Power Station



GRDA #2



McClain Plant

McClain (natural gas) - The McClain Plant is a 500-megawatt merchant power plant located near Newcastle, Oklahoma. It is fueled by natural gas produced in Oklahoma. OMPA purchased a 23 percent ownership share (approximately 118-megawatts) of this plant in 2000. McClain began commercial operations in 2001.



GRDA #2

GRDA #2 (coal) - In 1986, the Authority signed a life-of-unit contract for 25-megawatts from GRDA #2, located in Chouteau, Oklahoma. This 520-megawatt coal-fired plant uses Wyoming and some Oklahoma coal. Grand River Dam Authority owns the majority interest and operates the plant.

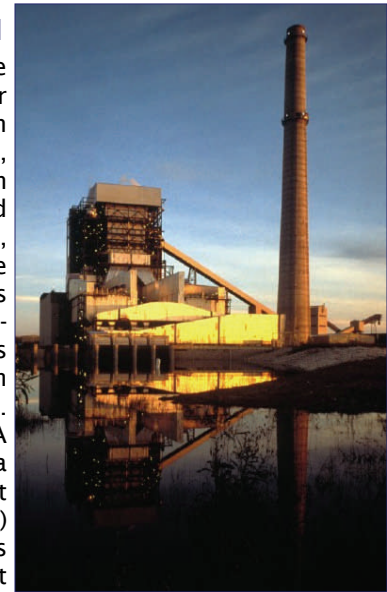


Oklahoma Wind Energy Center

Oklahoma Wind Energy Center (wind) - OMPA signed a long-term contract with FPL Energy, LLC. Under the terms of the contract, the Authority purchases 51-megawatts rated capacity of wind generation. The wind farm is on a 1,200-acre site along the Harper and Woodward County lines, northeast of Woodward. In September 2003, the Oklahoma Wind Energy Center became the first operational utility-scale wind project in the state.

Oklahoma #1 (coal) -

The Oklahoma Power Station, located in Wilbarger County, Texas, is just south of Frederick and Altus, Oklahoma, across the Red River. This 670-megawatt coal-fired plant receives its coal from Wyoming. Since 1986, OMPA has owned a 11.72 percent (80 megawatts) interest in this plant. The plant operator and majority owner is West Texas Utility.



Oklahoma Power Station